

# CONTENTS

WELCOME	4
THE ARRIVAL	6
THE COURTYARD	8
LIVING & DINING	14
POOL & BACKYARD	24
GAME ROOM	28
THEATER	32
ATRIUM & ARCADE	36
COURTYARD CASITAS	42
MORNING AT PINCELADA	48
GYM & POOL	58
KITCHEN & FAMILY ROOM	64
DINING & LIVING ROOM	70
OFFICES & GUEST SUITE	74
TO THE MASTER BEDROOM	80
ART COLLECTION	98
THE FUTURE OF PINCELADA	104

INTERIOR DESIGN & WRITING BY JAMES YOUNG  
PHOTOGRAPHY & LAYOUT BY DAVID MARQUARDT  
PHOTOGRAPHIC LIGHTING BY BRYAN EVANS



WELCOME TO · BIENVENIDOS A · BIENVENUE A  
PINCELADA







# THE ARRIVAL

The allegory of this villa was to interpret the many thoughts, dreams and journeys of a host and his wife which creates this of which you are invited to experience. This name Pincelada translated is symbolized as a "Grand Piece of Art," the villa represents itself as the canvas, therefore, one would be best to continue from an artist perspective what is about to be shared. This is a biographical expedition, not about a person's life but a person's dream... This is about the "Style of Pincelada".

On this odyssey on which you are about to embark, there is a certain sense of quietness through the desert breeze. As you approach the villa, the discrete grandeur of the curvilinear architecture, landscape and water garden is just a glimpse of its poetic quality.



# THE COURTYARD







The art of escapism is within moments as you ascend the marble and pebble stone steps to the courtyard gate of the villa. This courtyard, which has been inspired by travels to the national park El Yunque of Puerto Rico, has been given a modern interpretation that pays homage to nature. Again you are encouraged by the architecture, nature and art to experience something beautiful. Your senses will be intrigued enough for the experience of what is ahead of you.







“HER ETHEREAL QUALITY IS THE STATEMENT OF WHAT THIS VILLA REPRESENTS. AN INVITATION WITHOUT CEREMONY.”

JAMES YOUNG, DESIGNER



“Testing the Waters” circ., 1967 of the John F. Kennedy Estate



# LIVING & DINING







A room intended for the appreciation of art and architecture, a well balanced orchestration of a lifestyle. One might say with a quiet confidence... "It's a culture".

The vastness of the space is brought to balance by the modern artistic interpretations of the five elements; glass as water, wood, stone as earth, metal and fire, creating the fireplace which becomes the art formation titled, "Aguas Del Bosque".



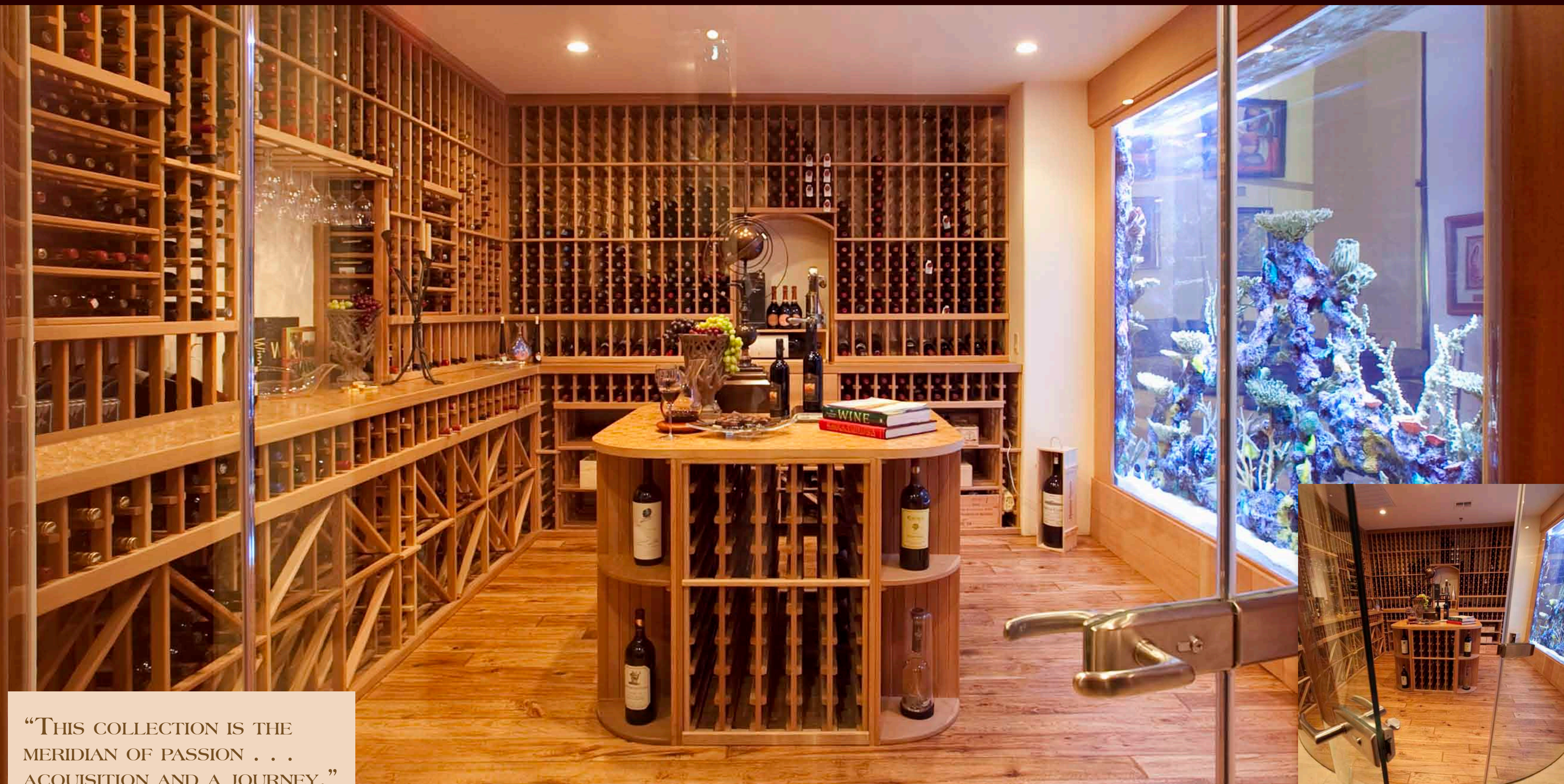




The oceanic translation of this space meets with the modern. Details of art through glass and painting give stage to the element of water. As you are setting a course on this aquatic voyage, one cannot help but feel the sense of a sinuous fluidity. Water draws you into this dream-like experience. The aquarium in its presence appears to hold guardianship over the wine conclave.







“THIS COLLECTION IS THE  
MERIDIAN OF PASSION . . .  
ACQUISITION AND A JOURNEY.”

JAMES YOUNG, DESIGNER





Fascinated by the architecture, you are lured into this entertaining venue exposed through its transparencies of glass and water. You are captivated by an elegant assemblage of wines. As in a library it reads like some of the most refined classic novels, names such as The Mouton De Rothschild Collection 1975 thru 1999, The Opus Collection...

Shelves abound and as in any library more exclusive selections await their placement.





# POOL & BACKYARD





One movement draws you to another, as you walk out into the clearing of this "forest". The combination of architecture and structural grandness leaves you breathless as you stand in its dimensional expression of contrast. Engaging the eye as color playfully creates intrigue with the romantic intertwining of the wind on water.





# GAME ROOM







The prelude to an evening of game and conversation... This room distinguishes its purpose by the pool table's strategic placement at center stage. This entertainment setting plays foreground to its city light-scape, which emerges like diamonds in the black sky.

The modern form with the organic art glass top is intended to replicate the river waters of this abstract forest. Its intention is to compliment and give way to conversations in the round.





# THEATER







Considered in its design, understated in its presentation, but detailed as it is position... The theater entry, with its "impressionist" painted-like granite floor, establishes its foundation to receive its visitors.

Exemplifying itself, the theater extends to you a, "Welcome... please be seated and relax, the movie is about to begin!"









# ATRIUM & ARCADE





This canyon-like atrium adjacent to the nook is reminiscent of the “Cloud Forest”, on La Roca trail of El Yunque National Park of Puerto Rico. This interior atrium/food court gives way as a game and activities venue, those like which are found at some of the most fashionable beach resorts.







Adjacent to the atrium is this self explained space, which is accessed through its sensor activated glass door.

Off the grid and encapsulated by its radiance of color and dynamics of sound, this arcade is a break away from the more calm of activities. A niche of mechanical diversions intended to transport you into its futuristic energy.





# COURTYARD CASITAS







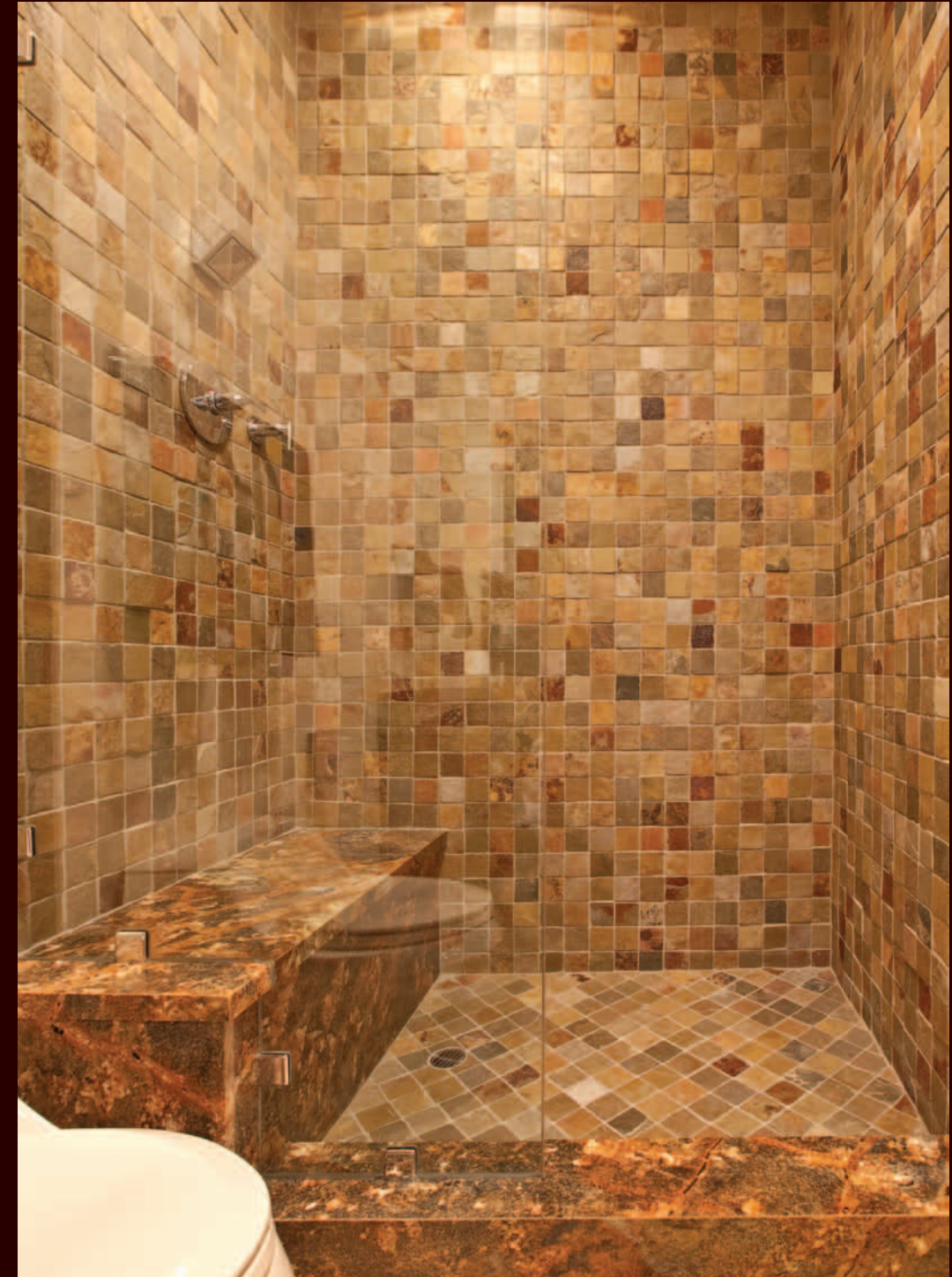
With their ambitions to provide their guests privacy and maintain the sense of seclusion, this ultra private suite with access via the courtyard and its aspirations of being the ideal, self reliant, makes a comfortable getaway for those guests who prefer a more independent stay without inconveniencing their hosts.

A luxe fitted bathroom, the inspiration for the calmed and relaxed. Although modern neutrality is the tone of this space; a relaxing scenario surrounds the guests by inviting them to experience and be enveloped within its cascading waters created by the infinity edge of the bath.

Tailored for the independent at heart and layered with convenient and notable modern European appointments. This sitting room with its views to the interior courtyard designates itself as a private alcove away from the sleeping chamber, maintaining its objective for either an evening of television watching or just as well suited for a morning latte.







This expansive and private guest suite is accessed from within the secured interior courtyard of the villa, lending itself as a quiet and soothing getaway adjacent to the various water features. The opaque glass door in the background provides access to the well appointed walk in closet. A well noted amenity of this space is its personal coffee bar, ideal for a morning espresso. Perfect, for either the overnight weekend guests or for a more extended stay.

One of the bathroom details is the generous oversized walk in shower that is there to welcome you after that long flight or long drive.



MORNING  
AT  
PINCELADA





As the items await their placement for the evening's festivities, an appreciation of this villa's nature embraces you... The senses again motivate one's imagination to transform from this architectural canyon into the interpretative "national forest". Executed with the detail and precision necessary in such a prominent location are the elements obvious at the stairwell.



A gathering enclave... A collaboration of space, texture and natural light, an airy and liberated transitional setting, visually meant to withdraw from its architectural confines; the epitome of the perfect view into the villa's private courtyard demonstrates breaking away from the conventional.





Interpretive design; Changing views from atop the “forest”, the “cliffs” and the atrium’s water feature gives way to the dynamic, transparent, freeform bridge. With first approach a true sensation of air is strongly represented by the glass, the curved captures the consciousness of movement and metal plays as a symmetrical balance of this modern day “Ladder Bridge”.



The meditative “cliff plateau”; meant for a quiet and contemplative respite, as the sunlight verberates the space, ever changing shadows of natural light echoes the branches of the architectural sky grid as a tree in this “forest”. The art is an extension intended to compliment with this continuing story.





Generously abundant in its texture, water and the labyrinth of art... The morning radiance leads one through a tranquil fusion, which best describes the courtyard as the villa's day passage to its second story.

The clarity of nature stands resolute through the various vertical window planes.





The bathing of sunlight washes this mélange of the exotic; the feminine and the fashion forward details make for the perfect combination to become this chic and couture statement as it is presented.



Situated in a remote location of the villa, this room makes optimum use of combining a synthesis of masculine vibe with fine art. Demonstrating certain constraint with the importance to rest and minimizing distractions.



Maintaining its position in a secluded alcove, brushed metal accents enhance the architectural details of this custom door which sets the presentation of the private elevator.



# GYM & POOL



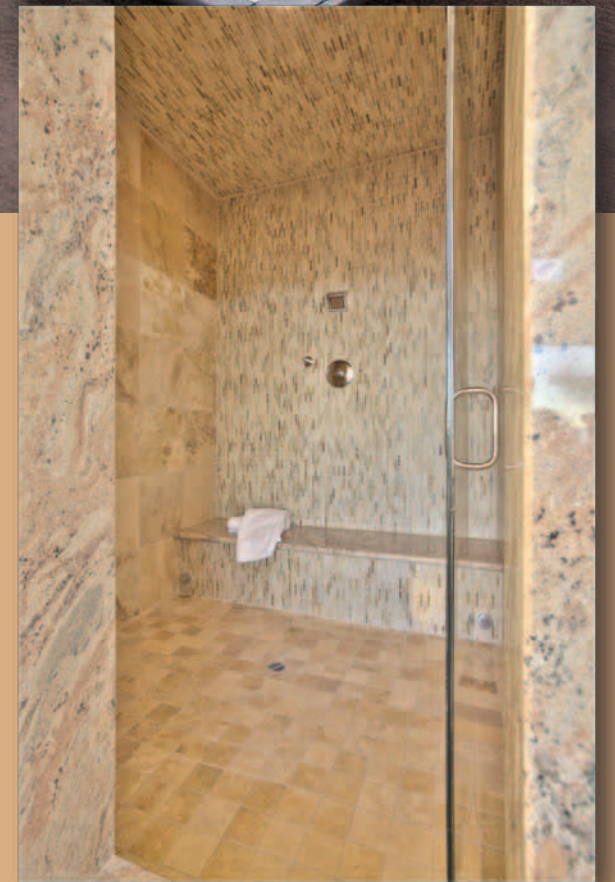




Rivalling the expectations of anyone considering the body optimum...

The unification of space and equipment were highly considered in the development for the hosts and their guests to enjoy the convenience of place in the villa overlooking the golf course. From its stellar platform, much consideration was given to achieving and maximizing the use of the expansive vistas and continuing its contemporary architectural essence.

Not to be conventional in its luxuries an oversized sauna is moments from a cool down shower of the adjacent bath.







After an exhilarating exercise session, the outside activity of relaxation and body rejuvenation commences out on the gym balcony. The mission at hand is to take full advantage of what is the essence of this villa, partaking in the constant- unbounded expanses of sky, complimented by the stillness of the mountains beyond.



Being true to the villa's soul and as in any rainforest, water as the core plays an important role. Staged centrum to the overall space, the swimming pool has been geometrically inspired by the structure's dramatic lines and rich details. The villa's unconscious summons to relax is initiated by its various tiers of seating. As you walk throughout its freeform esplanade, the intention is that the terrace levels are defined by the natural stone materials and their contrast in texture.



KITCHEN  
&  
FAMILY ROOM







The aesthetic qualities are constantly changing with the movement of the sun and its luminosity as it enhances the villa. An exceptional ambiance created as the saturating sunlight embeds itself through the crevices of the stucco, this intimate setting can be flexible to whatever function it may have to carry.

Both rooms devoted to the ideas of guests, hospitality and entertainment. A vital component to the function is initiated by the abundant glass panels which can retract automatically without challenge.





A room that is obvious in its visual but extreme in its detail. The intention is to be cohesive and attractive in its use of space. Purely extravagant yet exceptional in its function and is manipulated through its use of position and materials. The perimeter cabinetry is a statement of intense voluminous storage. Dual locations of chef are firmly established within the boundaries of granite. Ease of condition for hospitality through the vastness of surface area and perimeter passage.





# DINING & LIVING ROOM







This montage of art and its collaborative style as it's placed in the rooms presented portrays itself as an entourage of friends. From the very moment of arrival into the space, the unconscious mission of these works of art is to engage the numerous guests to be absorbed in their beauty; the space is washed in the sun's radiance... Light echoing off the flirtatiousness of the art...





# OFFICES & GUEST SUITE







Celebrating the archetype, this office, as one proceeds through the retractable glass doors, one admires the spatial hierarchy when entering into this voluminous space yet you are not to forget that this is an escape as is evident by its expansive window to the entry courtyard. Forging to be a singular identity, the objective was the integration of residential attractiveness with the corporate elements.

“FORGING TO BE A SINGULAR IDENTITY, THE OBJECTIVE WAS THE INTEGRATION OF RESIDENTIAL ATTRACTIVENESS WITH THE CORPORATE ELEMENTS.”

JAMES YOUNG, DESIGNER



In the “Circle of Awards and Achievements,” there is suspended within the space, a copper metal sculptured “ballerina” always in revolution, as if she was presenting to a visitor the accolades of triumph and sports memorabilia as they take presentation in this iconic verticality.







Making it a perfect compliment for a personal assistant or house concierge, this adjoining office with a private entrance direct to the entry courtyard holds a mystery. Cloaked in its library dressing of bookshelves in display like a trompe l'oeil painting, it comes to life when one opens the conceal passage to the larger executive office.

A great amount of consideration was given when creating this idyllic suite and like in other suites of this villa, the particular uniqueness of this space is the balance between its architecture and the furnishings within. Contemporary restraint was the objective as to not overwhelm the visitor, making it a peaceful pool side retreat. The sleeping chamber evokes the idea of relaxation, also contained within this suite is a raised sitting area with its panoramic views to the expansive pool, spa and the private terrace. As any one would expect, the bathroom experience maintains the same degree of uniqueness in its use of materials offset by its architectural tone.



TO THE  
MASTER BEDROOM







One is reminded again, everything here is meant to be experienced, only to discover when you reach the top of this “plateau” you are confronted with a sensation of walking in mid air. A synthesis of sleek elements and the engineering of their components create this absolute statement of transparency against the backdrop of the lush plantings and waterfalls almost like an experience of a walk in the clouds above the “forest”.

The passage from the master bedroom to the atrium is achieved via the carved art glass door, or through the electronically secured sliding glass panel which maintains a higher degree of privacy when necessary.







*His*

In his closet every detail was addressed in the designing of this closet vis-à-vis a gentleman's valet-consultant. Priority was to optimize the space for the now and to accommodate for the needs of the future. For the man who travels, space has been provided for luggage storage and is accessible within the closet and in continuing the "villa feel" a skylight provides natural sunlight.



*Hers*

Meeting with the resort lifestyle expectations, the mission at hand was to take full advantage of the space provided. In the effort to maximize use of space a generous and ambitious use of closet cabinetry was strategically placed, with consideration of seasonal travel, the majority of the garments and accessories are protected behind glass doors or drawers. Again a skylight is there to provide natural daylight to compliment with dressing and color matching.





A statement of luxury is established the moment one enters into this private domain, an all inclusive master lounge. Perfectly addressing any needs one would have by providing the amenities necessary. So unique and immediately without hesitation a view of breathless capacity can't help but be acknowledge. Adding to the surroundings, the fireplace takes center stage within the room, providing at a moment's request either the tone of romantic ambiance or as seldom as it occurs to take the chill off of a cool desert night. The raised sitting area is an example of a clever use of situation, it takes advantage of either a beautiful twilight setting or lending itself as a great media center.





In this visually extraordinary master bath many facets embody this "sanctuary of tranquility". Centrally dividing his and her sides, an exceptional steam shower, interprets the environment of the "rainforest". The villa's "cueva de las aguas", a sacred retreat, the natural stone is symbolic as the cliff sides of a waterfall in a "rainforest", the programmed deluge of quenching waters represents the falls.

Consideration was given to meet with the needs of each individual, his and her baths are appointed with every concerned addressed. His is equipped with its custom gentleman's chest, a private water closet and a vanity chest with its carved stone sink. Her side keeps consistent the theme with its custom millwork and is also veneered in exotic hardwoods; another personal luxury is the petite sink at her

makeup vanity and adding to this ultra space is the ample floor to ceiling pull out storage. Her luxuriant vanity cabinetry is complemented by an ample marble countertop and a carved stone sink.

His

Hers





The texture stone mosaic with its earthen quality contrasting against the smooth sleekness of the tub which is located at one of the most uninterrupted view points of the villa, a space indulged and flawless in its completed detail. A crescendo... A magnum opus...

Being the central core of the master wing, this extraordinary master bed chamber is a paradigm to the art of sleep, backdrop by a neutral palette and offset by its subtle tones of contemporary elegance. One of the optimum features is the room's ability to be transformed by opening the architecturally integrated motorized glass walls, effectively maximizing its sense of space onto the extensive private balcony.







“A MEDITATIVE SPACE BARRING  
NO WALLS, A QUIET PLACE TO  
REJUVENATE...”

JAMES YOUNG, DESIGNER







“ACHIEVING AN ENDURING PASSION FOR  
THE ULTIMATE VIEW...”

JAMES YOUNG, DESIGNER

This balcony of merit, an uncomplicated area is an extension  
of the master bed chamber and lounge.









# ART COLLECTION







VENDEDOR DE ILUSIONES  
ENRIQUE DE JESUS



HIBISCUS DANCER  
V. KUCH



MI NOCHE TRISTE  
CARLOS PAEZ VILARO



PASSION  
BORISOFF



ANNELIE  
CARLOS PAEZ VILARO



RACHEL  
MARC CHAGALL



OIL PAINTING 30X40  
YUN HA KIM



FLOR NACIONAL  
ENRIQUE DE JESUS



THE PIPER  
BORISOFF



GANDUL  
ENRIQUE DE JESUS



ORGULLO DE MI TIERRA  
ENRIQUE DE JESUS



MASQUERADE  
PETER O'NEIL



BUSCANDO EL PASADO  
ENRIQUE DE JESUS



GUINEOS  
ENRIQUE DE JESUS



2044 RED/ORANGE/BLACK  
WICHI TORRES



EL QUIJOTE  
WICHI TORRES



MI NOMBRE ES INTERNACIONAL  
ENRIQUE DE JESUS





TRISTESSE DU ROI  
HENRI MATISSE



LA PROMESA  
ENRIQUE DE JESUS



HUEVOS  
ENRIQUE DE JESUS



LAS VACAS DE CHITO  
ENRIQUE DE JESUS



BOOK I ILLUSTRATION  
JEAN MIRO



RULETA CHINA  
CARLOS PAEZ VILARO



JOBO  
ENRIQUE DE JESUS



PAPAYA  
ENRIQUE DE JESUS



CUANDO EL FLAMBOYAN LLORABA II  
ENRIQUE DE JESUS



TOROS ILLUSTRATION  
PABLO PICASSO



VIGILANTE DE LOS CAMPOS  
ENRIQUE DE JESUS



THE DANCERS  
BEETHOVEN ORG.



BERENJENAS  
ENRIQUE DE JESUS



PAISAJE MIO  
ENRIQUE DE JESUS



TOROS ILLUSTRATION  
PABLO PICASSO



QUENEPAS  
ENRIQUE DE JESUS



MOFONGO  
ENRIQUE DE JESUS



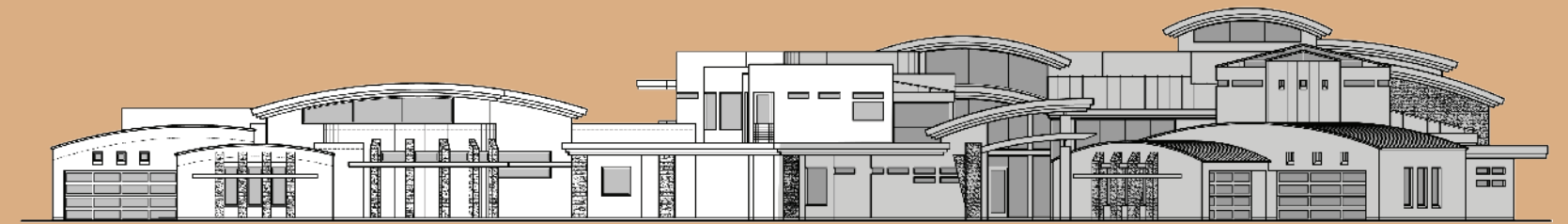
CHAYOTE  
ENRIQUE DE JESUS



EL ABRAZO  
WICHI TORRES



# THE FUTURE EXPANSION OF PINCELADA





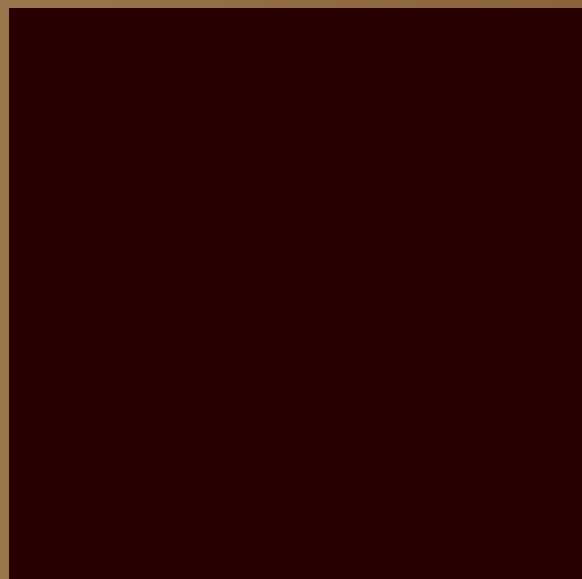


“AN OPULENT SEQUEL... WHERE  
“LESS IS MORE” IS NOT THE RULE.  
A VILLA FOR GENERATIONS...”

JAMES YOUNG, DESIGNER

Already drawn are the plans for the expansion of Pincelada. These three breathtaking spa villas will be surrounded by the shimmer of blue sapphire waters and lush, rich foliage. Guests will be welcomed into private garages, pampered with an additional spa and kitchen, and most of all, spoiled by the quiet solitude of an ultra-luxe estate which rests atop the most exciting city in the world.





# ACKNOWLEDGEMENTS

We would like to extend our gratitude and appreciation to the following individuals and their companies for their extraordinary work in the production of this book.

—The Owners of Pincelada

James A Young  
James Young Designs, Ilc.  
Las Vegas, NV USA  
[www.jamesyoungdesigns.com](http://www.jamesyoungdesigns.com)

David Marquardt  
Cinemia Productions  
Henderson, NV USA  
[www.cinemediaproductions.com](http://www.cinemediaproductions.com)



